

Accommodation

Grand Skylight Catic Hotel (Conference Venue)

北京格兰云天大酒店 朝阳区-北辰东路 18 号 700-800CNY/day

The hotel has various types of rooms, comfortable and warm. All rooms are equipped with central air conditioning, IDD telephone, mini bar, refrigerator, safe, satellite closed-circuit television, wireless Internet, etc. The European style western restaurant in the hotel operates authentic French Western food; Taiji Cantonese cuisine Chinese restaurant specializes in new Cantonese cuisine. The hotel has conference space of different sizes and functions, which can hold any activities and business meetings.

<http://grandskylightcatic.hotels-inbeijing.com/>

If you need to make a reservation of this hotel, please register your stay in the registration web.

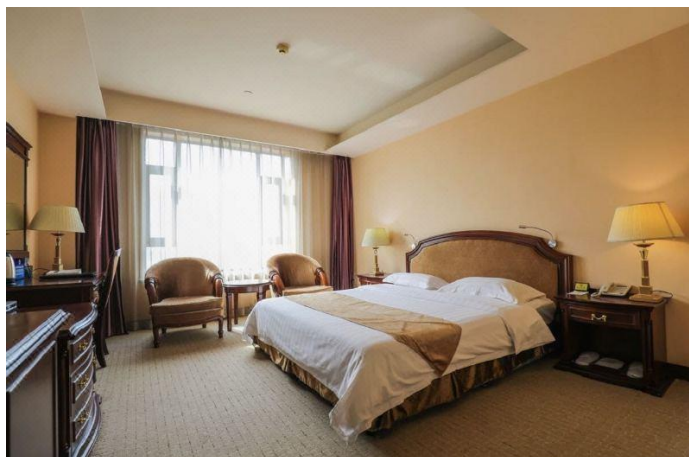


National Jade Hotel Beijing (English service available, 370 m to conference venue)

北京国玉大酒店 400-500CNY/day

National Jade Hotel Beijing The hotel is located in the bustling Asian Olympic business district, adjacent to the National Stadium, the "Water Cube" (National Aquatics Center), the National Convention Center, and the China Science and Technology Museum, with a superior geographical location.

<https://www.hotels.cn/en/ho521645/national-jade-hotel-beijing-beijing-china/>



Aobosen Hotel (English service not available, 780 m to conference venue)

奥博森酒店(北京国家会议中心鸟巢店) 300-400CNY/day (If you need help to make a reservation, please contact us, Lihao Zhao, zhaolihao@tsinghua.edu.cn)

Website: <https://hotels.ctrip.com/hotels/1733003.html>



James Joyce coffetel(English service not available, 1.2 km to conference venue)

喆啡酒店(北京鸟巢科技馆店) 300-400CNY/day (If you need help to make a reservation, please contact us, Lihao Zhao, zhaolihao@tsinghua.edu.cn)

Website: <https://hotels.ctrip.com/hotels/71659011.html>

